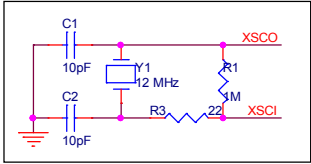


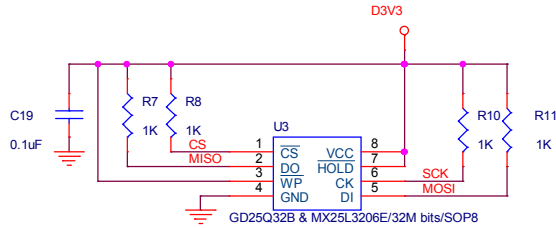
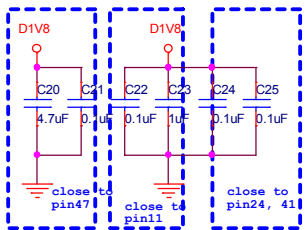
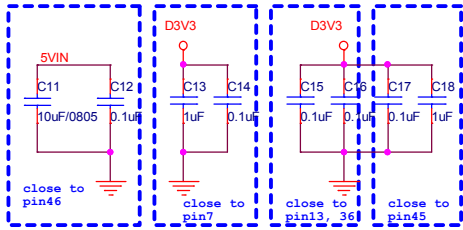
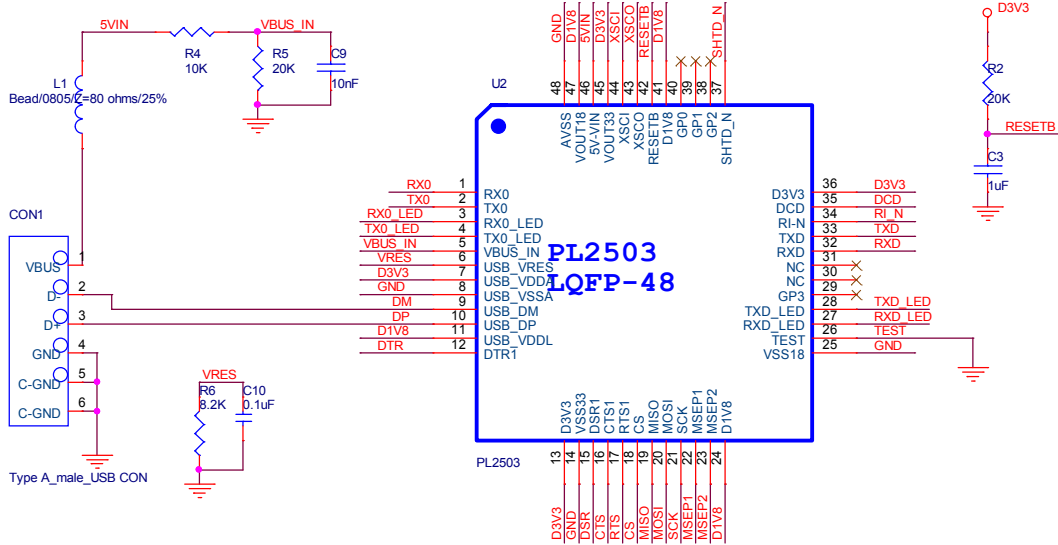
Version	Date	Description	Author
V1.0	2014/5/7	First release	Steven-Huang
V1.1	2014/5/27	Pin Name Modified	Richard-Tsai
V1.2	2014/5/30	Pin Location Modified	Richard-Tsai
V1.3	2014/6/11	Pin Name Modified	Richard-Tsai
V1.4	2014/9/12	Add OPT_0 & OPT_1 note	Richard-Tsai
V1.6	2016/04/26	Modify RS232 transceiver power for PL2503 I/O pins tolerance. Rename pins name from OPT_0/OPT_1 to MSEP2/MSEP1	KY-Wu
V1.7	2016/09/23	To connect pin23 of U1 to D3V3	KY-Wu
V1.8	2016/10/20	Add TX0/RX0/TX0_LED/RX0_LED signals& componments. Displace MSEP1/MSEP2/TXD_LED/RXD_LED placement.	KY-Wu

PROLIFIC		
Title		
PL2503 LQFP-48 reference schematic		
Size	Document Number	Rev
B	Revision history	1.8
Date:	Friday, October 21, 2016	Sheet 1 of 2



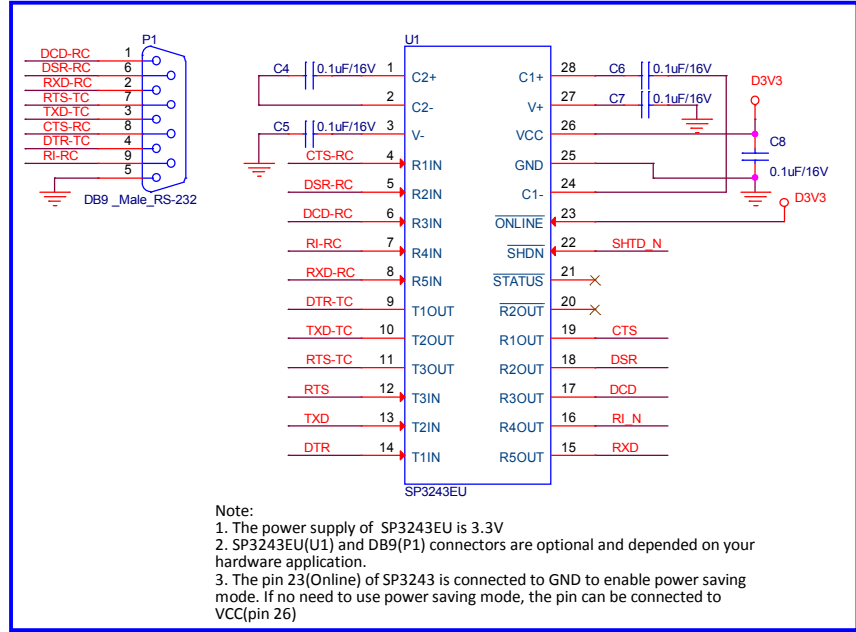
Note:

	MSEP1	MSEP2
Always Disable Mass Storage	Don't Care	Low
Always Enable Mass Storage	High	High
Disable Mass Storage if Driver stored in mass storage has been installed	Low	High

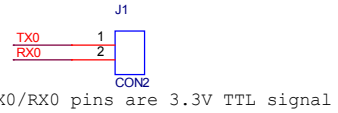


- Note:
- The SPI flash is used to store the software (such as device drivers, ...).
 - Please contact Prolific's FAE to get the latest supported flash list.

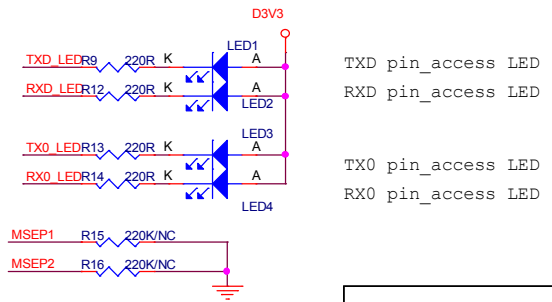
RS-232



- Note:
- The power supply of SP3243EU is 3.3V
 - SP3243EU(U1) and DB9(P1) connectors are optional and depended on your hardware application.
 - The pin 23(Online) of SP3243 is connected to GND to enable power saving mode. If no need to use power saving mode, the pin can be connected to VCC(pin 26)



TX0/RX0 pins are 3.3V TTL signal



Title		
PL2503 LQFP-48 reference schematic		
Size	Document Number	Rev
B	Schematic	1.8
Date:	Friday, October 21, 2016	Sheet 2 of 2