



PL2543

**USB 2.0 to 4-port UART controller
PCB Layout Guideline**

Document number : AN-25211201

Revision : 1.0

Release Date : 2021-12-21

Prolific Technology Inc.

7F, No. 48, Sec. 3, Nan Kang Rd.

Nan Kang, Taipei 115, Taiwan, R.O.C.

Telephone: +886-2-2654-6363

Fax: +886-2-2654-6161

E-mail: sales@prolific.com.tw

Website: <http://www.prolific.com.tw>

Table of Contents

Overview.....3

1. USB2.0 trace.....3

2. Power5

3. Others.....5

Overview

The guidelines provide the recommended consideration on PCB layout.

1. USB2.0 trace

- USB2.0 differential pair traces should be routed with differential impedance of $90 \pm 15\%$ ohms.
- The trace length of one trace of USB2.0 differential pair should be as the same as possible with another trace. Maximum trace length difference of USB2.0 differential pair should be no greater than 100 mils.
- Avoid the signal traces with the angle of 90 degrees as Figure 1. The signal traces include the traces of USB2.0 signal and crystal.

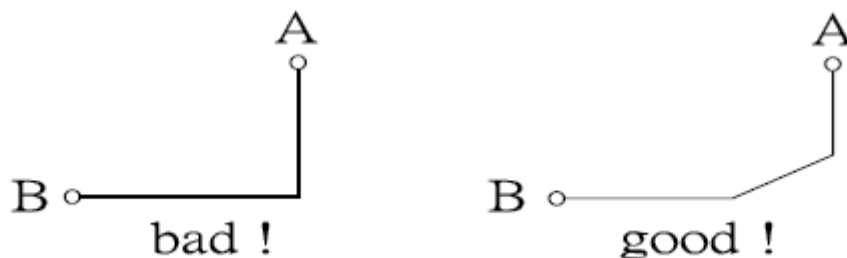
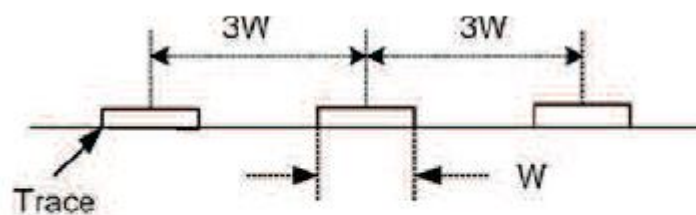


Figure 1

- When using a common mode choke and an ESD protection part to suppress EMI and ESD, they should be placed as close as possible to the USB connector.
- Never route USB2.0 differential traces near other high frequency traces and parts such as crystal and IC to avoid crosstalk.

Ways to Avoid Crosstalk:

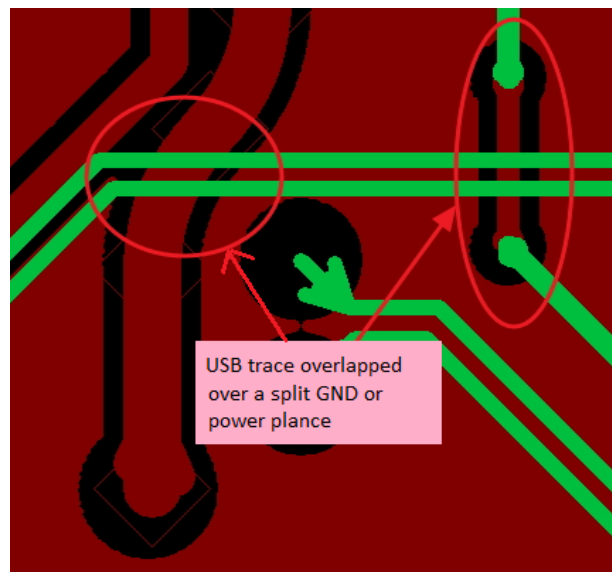
- Use the 3W rule (3 times of the width of USB2.0 signal trace as Figure 2) to separate USB2.0 signal trace from other high frequency traces and parts.
- Use ground traces/guards around either USB2.0 signal trace or other high frequency signal traces and parts.



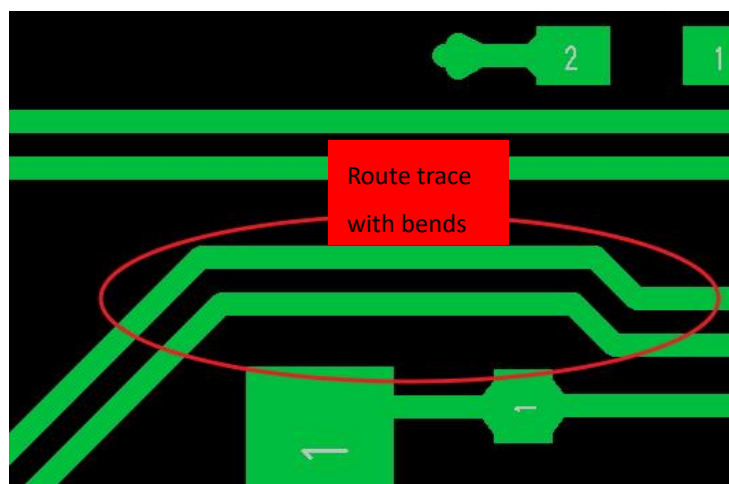
The "3W" rule

Figure 2

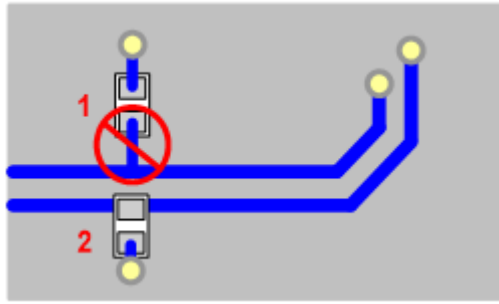
- Never route USB2.0 differential traces near the PCB edge to prevent from the distortion of USB2.0 signal by EMI and ESD.
- Never route USB2.0 differential traces over the split ground and power planes as Figure 3. For a worse example as Figure 3, USB2.0 differential traces are routed on the top layer of PCB and overlapped a split ground or power planes with other signal traces on the second/ adjacent layer(for 4-layer PCB) or the bottom/adjacent layer(for 2-layer PCB) of PCB.

**Figure 3**

- It is recommended to straight route USB2.0 differential pair and less route them with bends as Figure 4.

**Figure 4**

- Stubs on USB 2.0 differential pair as Figure 5 should be avoided. While stubs exist, it will cause signal reflection and affect signal quality. If a stub is unavoidable in the design, should be as shorter as possible.

**Figure 5**

2. Power

- Place decoupling capacitors near the power pin of PL2543.
- Minimum trace width of 1.2V, 3.3V power is 10 mils for application without GPIO pins.
- Minimum trace width of VBUS power pin of USB connector and other 5V power pins is 20 mils.
- It is recommended to partition a 3.3V power plane to connect all of 3.3V power nets if there are many 3.3V power nets in your schematic.

3. Others

- The trace between crystal pins of PL2543 IC and the external crystal is as short as possible.
- NC pins of 4-pin crystal should be connected to GND to prevent from generating EMI.
- Allocate the unused area of PCB as a GND plane to enlarge GND plane and keep GND plane continuous on whole PCB.

Disclaimer

All the information in this document is subject to change without prior notice. Prolific Technology Inc. does not make any representations or any warranties (implied or otherwise) regarding the accuracy and completeness of this document and shall in no event be liable for any loss of profit or any other commercial damage, including but not limited to special, incidental, consequential, or other damages.

Trademarks

The Prolific logo is a registered trademark of Prolific Technology Inc. All brand names and product names used in this document are trademarks or registered trademarks of their respective holders.

Copyrights

Copyright © 2021 Prolific Technology Inc. All rights reserved.

No part of this document may be reproduced or transmitted in any form by any means without the express written permission of Prolific Technology Inc.

Prolific Technology Inc.

7F, No. 48, Sec. 3, Nan Kang Rd.
Nan Kang, Taipei 115, Taiwan, R.O.C.
Telephone: +886-2-2654-6363
Fax: +886-2-2654-6161
E-mail: sales@prolific.com.tw
Website: <http://www.prolific.com.tw>